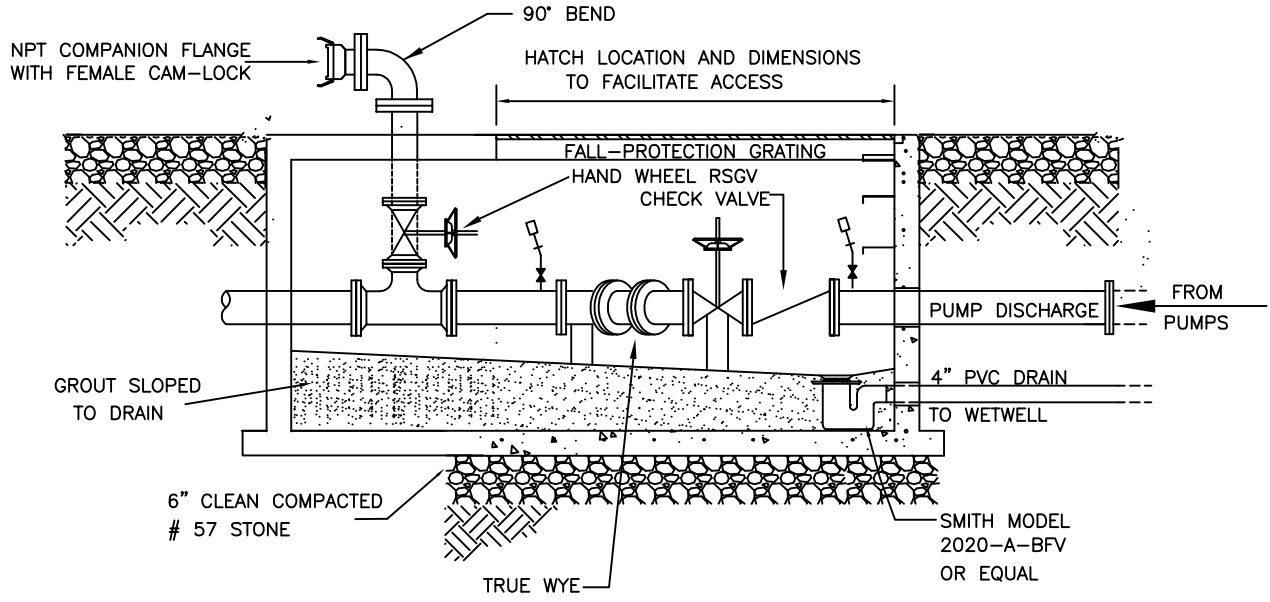
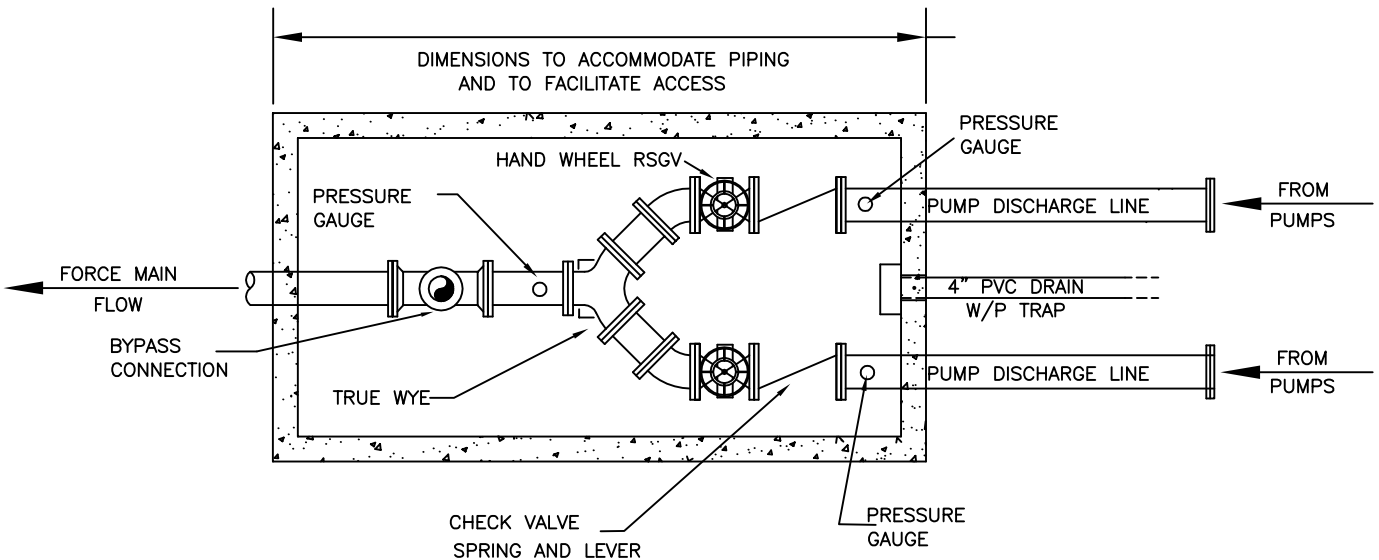


CONSTRUCTION DETAIL NO. 24



SECTION VIEW

N.T.S.



PLAN VIEW

N.T.S.

(FOR SUCTION-LIFT STATIONS, SEE NOTE BELOW)

NOTE: DEPENDING ON THE PUMP STATION MANUFACTURER, SUCTION LIFT PUMP STATIONS MAY HAVE SOME OR ALL OF THE VALVES AND PIPING LOCATED ABOVE GROUND, AS PART OF THE PUMP PACKAGE WITHIN THE ENCLOSURE. HOWEVER, THE BYPASS CONNECTION AND ASSOCIATED VALVE(S) SHALL BE LOCATED WITHIN A SEPARATE VAULT, THE LAYOUT OF WHICH SHALL BE SIMILAR TO THAT SHOWN ABOVE. THE ENGINEER SHALL SUBMIT THE VALVE VAULT AND/OR BYPASS CONNECTION ARRANGEMENT TO THE SSSD ENGINEERING DEPARTMENT FOR APPROVAL.



*SUBMERSIBLE PUMP STA.
VALVE VAULT W/ BYPASS
CONNECTION*

SCALE: NONE

REVISION DATE: APRIL 13, 2009