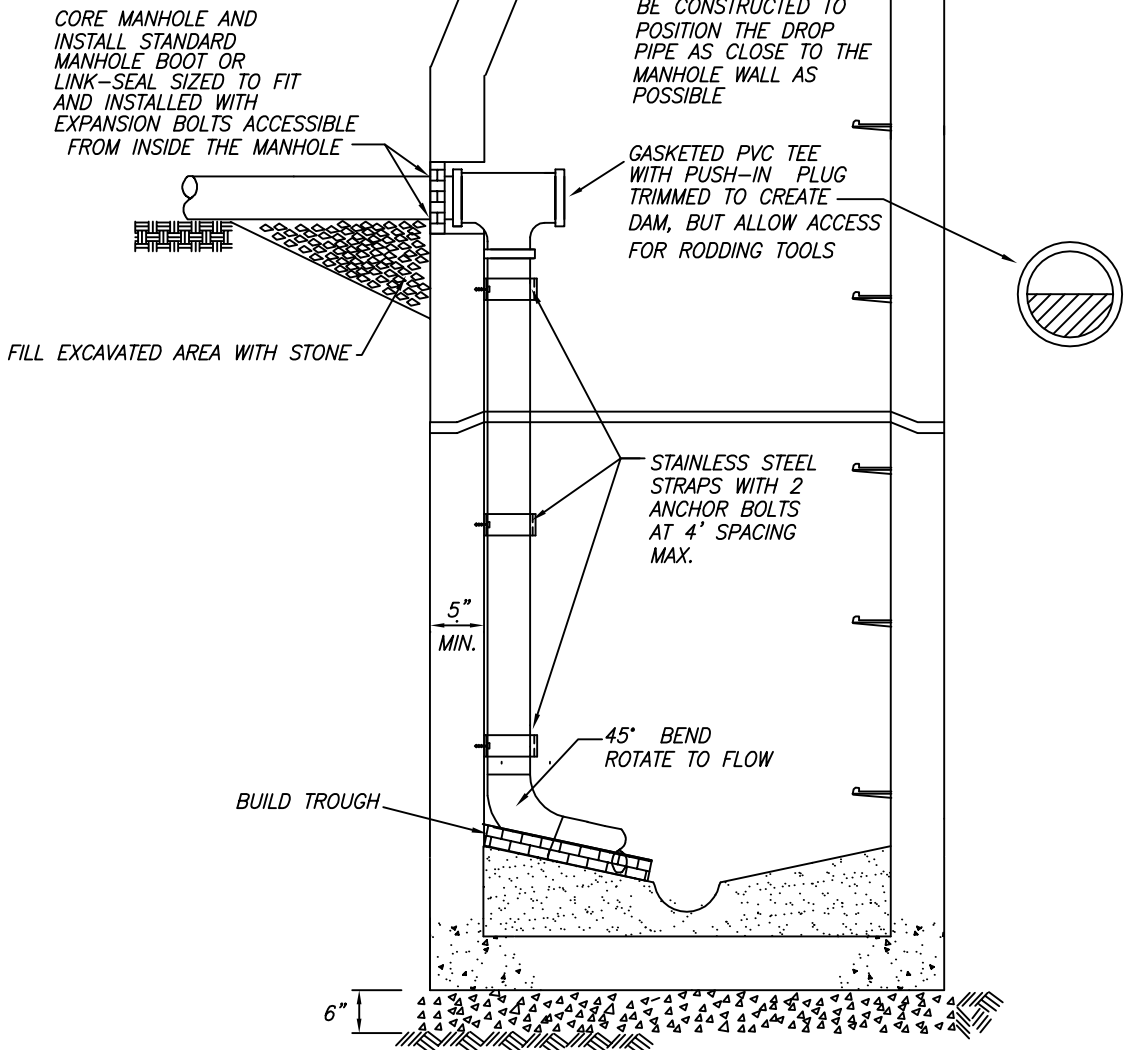


CONSTRUCTION DETAIL NO. 7

RIM ELEVATION MAY BE ADJUSTED, A MAXIMUM OF 9" USING BRICK OR CONCRETE GRADE RINGS.

NOTES

- 1) INSIDE DROPS FOR MAIN LINES (8" AND LARGER) AND 6" SERVICE LINES ARE ONLY ALLOWED AS PART OF THE ORIGINAL SEWER DESIGN, WHEN THE DROP IS GREATER THAN 12' AND THE NEXT LARGER ID MANHOLE IS INSTALLED
- 2) INSIDE DROPS MAY BE INSTALLED FOR 4" AND 6" SERVICE LINES ON EXISTING MANHOLES WHEN THE DROP IS GREATER THAN 12' THE TEE AND DROP PIPE MUST BE SECURED AS CLOSE TO THE MANHOLE WALL AS POSSIBLE TO MINIMIZE RESTRICTION OF ACCESS.



TYPICAL
INSIDE DROP
MANHOLE

SCALE: NONE

REVISION DATE: APRIL 13, 2009